

**Kearney
Hook Stick Operated Disconnects**

Type M-72 Station Class

15.5, 25.8, 38.0kV - 600 Amps. Continuous
40,000 Amps. Momentary
110, 150, 200kV BIL

Kearney Type M-72 single pole single throw station class hook-stick operated disconnects operate efficiently from terminal point to terminal point. Stability of hard drawn copper channel formed blade construction and associated current carrying components are complemented by switch operating hardware for operating ease and assurance of dependability under high thermal or momentary conditions.

Rating: High current carrying capacity of 600 amperes continuous and 40,000 amperes momentary.

Blade Design: Truss-type construction of formed copper bars has increased width at hinge to assure greater rigidity that maintains positive alignment during closing and guards against side thrust deflection. Blades are hard drawn copper, silver plated at contact points.

Hard Drawn Copper Contacts: Consistent conductivity is assured through utilization of hard drawn copper in forming one-piece stationary contacts and terminal pads. Design reduces current interchange points to a minimum.

Positive Blade Lock and Pryout: Blade latch prevents switch opening under heavy short circuit conditions. Easy opening is assured through pryout assist.

Silver to Silver Contacts: pressure line contact on clip and circular line contact on hinge have brushed silver coating. This provides silver to silver contact at current transfer points. Contact surfaces are self-cleaning, self-wiping. Silver washer at hinge between blade and stationary contact prevents galling under all service conditions.

Tin Plated Terminal Pads: Accommodate terminals for either aluminum or copper conductors.

90° Blade Stop: Furnished with switch. Stops can be field removed for 180° blade travel.

Insulators: Three inch B.C. NEMA Standard Station Post. Characteristics available on request.

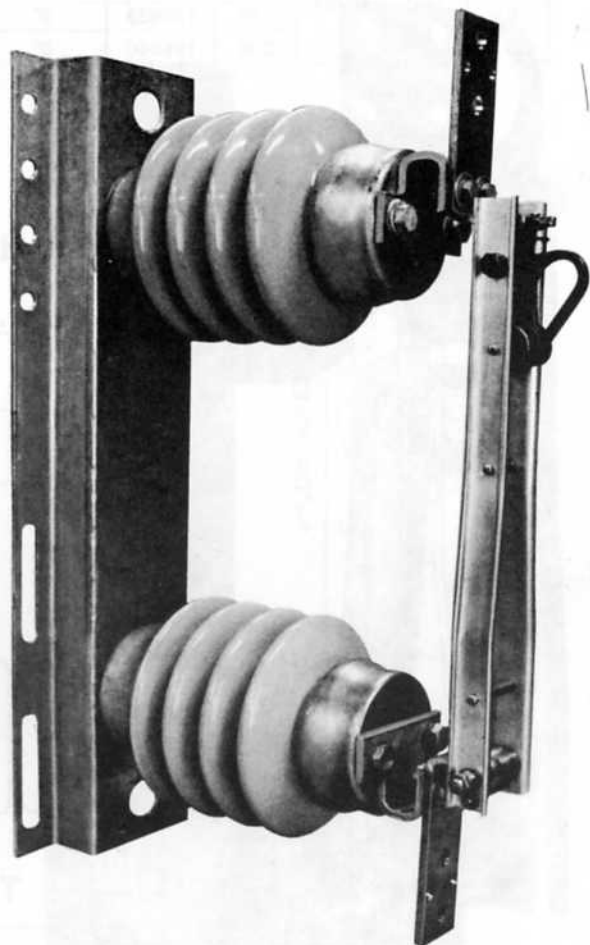
Steel Channel Base: Base is rugged hot dipped formed galvanized steel, deadend hole at both ends of base.

Vertical Mounting is Standard: Available for underhung mounting if specified.

Terminal Options: Switches can be furnished with any terminal arrangements documented. Terminals are not included in the price of switch.

Special Applications: Variations to meet specific customer requirements are available upon request.

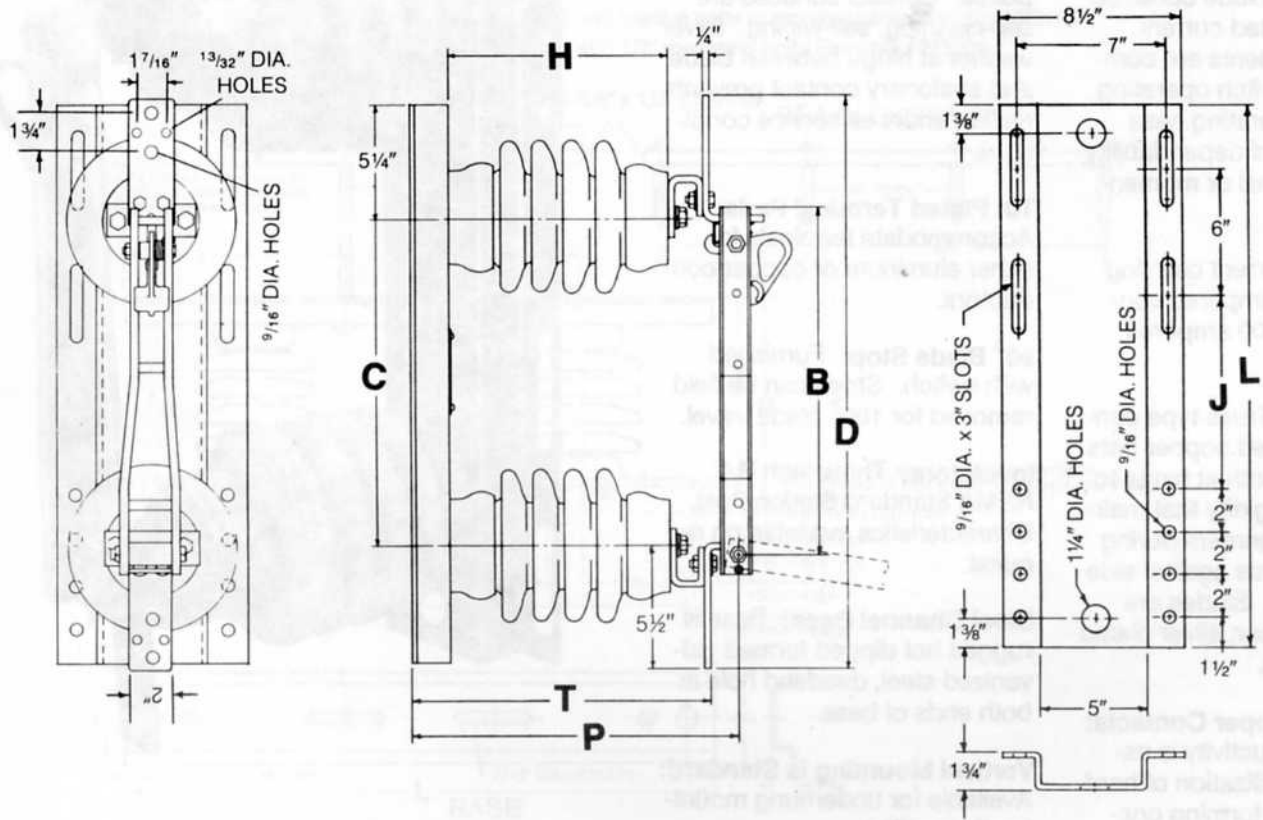
Stainless Steel Load Break Hooks: For use with portable load interrupter tool. Available upon request.



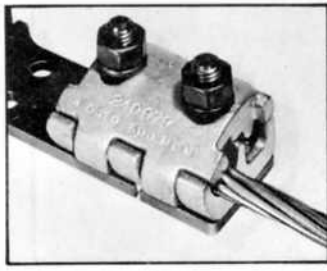
**Type M-72
Station Class**

Dimensions and Ordering Information

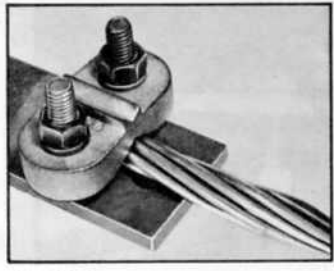
RATINGS			Catalog Number	Diam. Bolt Circle Insulators	DIMENSIONS, Inches Reference Only								Approx. Net. Wt. Lbs.	Insulator Gray Cat. No.	
kV Max. Design	Amperes				BIL kV	B	C	D	H	J	L	P			T
15.5	600	40,000	110	126636	3"	15 $\frac{3}{4}$	15	26	10	9	25 $\frac{1}{2}$	14 $\frac{3}{4}$	13 $\frac{1}{2}$	53	241097-21
25.8			150	126638	3"	18 $\frac{3}{4}$	16	29	14	12	28 $\frac{1}{2}$	18 $\frac{3}{4}$	17 $\frac{1}{2}$	78	241097-31
38			200	126640	3"	24 $\frac{3}{4}$	24	35	18	18	34 $\frac{1}{2}$	22 $\frac{3}{4}$	21 $\frac{1}{2}$	117	241097-41



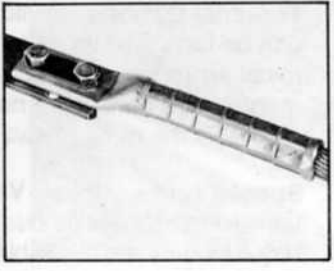
Terminal Assemblies



230026 TWO-BOLT PARALLEL GROVE CLAMP. Secured with two captive stainless steel bolts. Conductor range: #6 Solid to 397 5 MCM ACSR, 6 Solid to 500 MCM Copper.



262224 CONVENTIONAL TWO-BOLT CLAMP. Accepts conductor sizes ranging from #4 Solid to 666 6 MCM ACSR and #4 Solid to 3/4" I.P.S. Copper.



COMPRESSION TERMINAL Refer to Catalog Section 13 for complete information relative to compression fitting required.