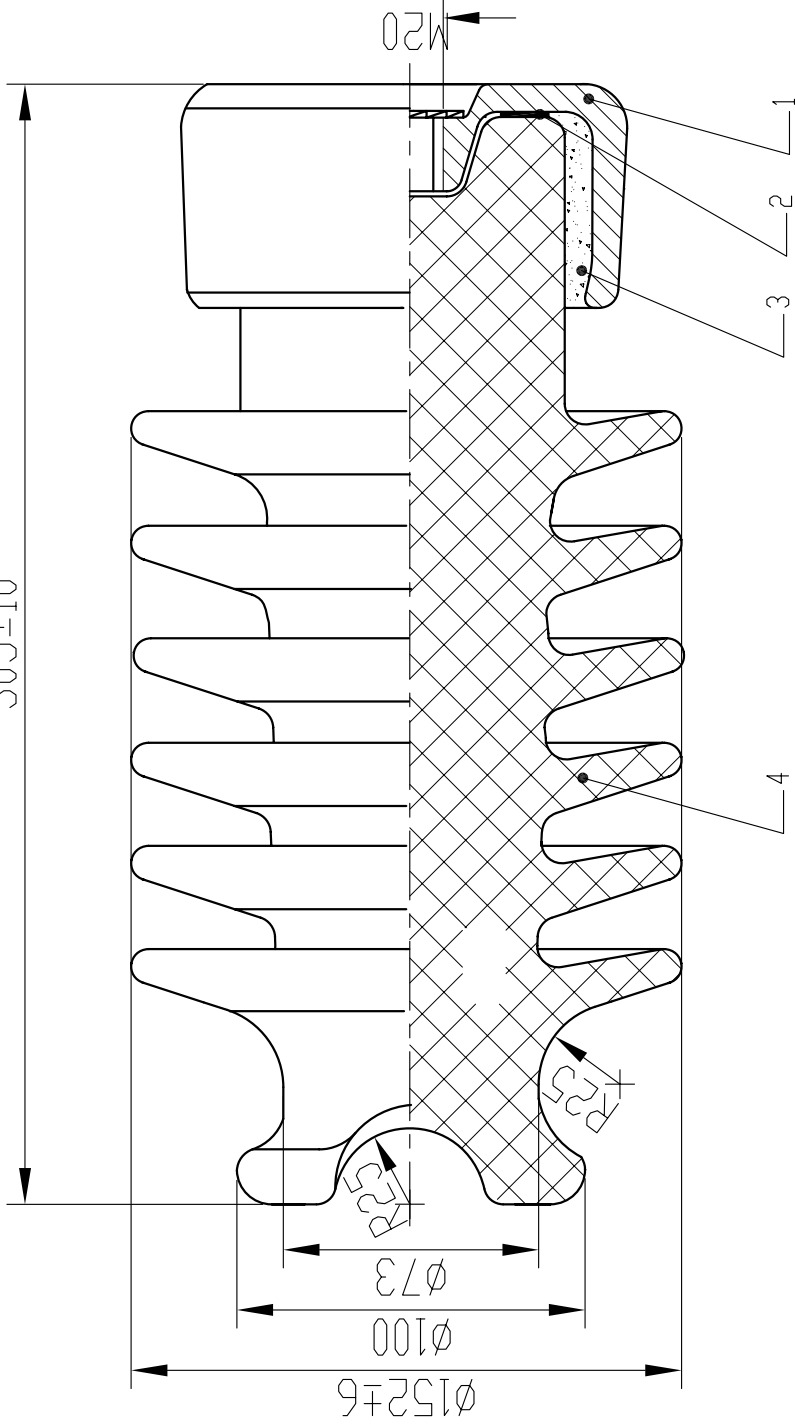


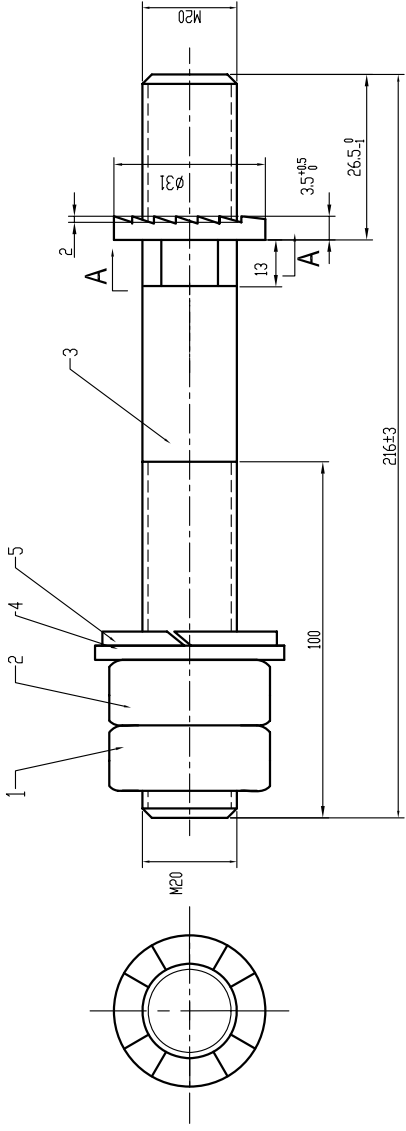
305±10



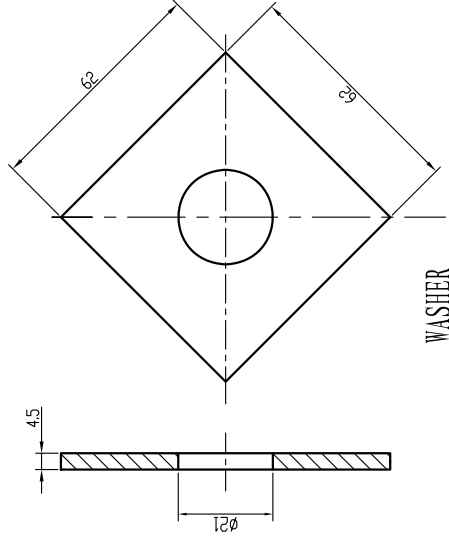
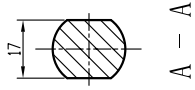
TECHNICAL REQUIREMENT:

1. LEAKAGE DISTANCE: 559mm
3. CANTILEVER STRENGTH: 12.5kN
4. CANTILEVER PROOF LOAD: 5kN
5. LOW-FREQUENCY DRY FLASHOVER: 110KV
- LOW-FREQUENCY WET FLASHOVER: 85KV
6. CRITICAL IMPULSE FLASHOVER, POSITIVE: 180KV
7. CRITICAL IMPULSE FLASHOVER, NEGATIVE: 205KV
8. LOW-FREQUENCY TEST VOLTAGE, RMS TO GROUND: 22KV
- MAXIMUM RIW AT 1000 KHZ, RADIO FREED: 100 µ V
9. COLOUR OF INSULATOR GLAZED: BROWN
10. STANDARD: ANSI C29.7-1997 ANSI C29.1-1982

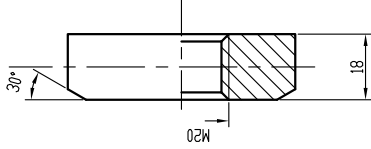
4		PORCELAIN	1	IV				
3		CEMENT						
2		CORK	1					
1		FITTING	1	QT450-10				
No	DRAWING No	NAME	Q.TY	MATERIAL	ONE WEIGHT	TOTAL WEIGHT	NOTE	
						1568		
		57-2L		DRAWING No		PHASS SIGN		SCALE
		INSULATOR		TOTAL 2 PAGES		PAGE 1		
SIGN	QTY	REJIGER No	NAME	DATE				
DRAWN		Huorgli						
CHECKED		Tina						
APPROVE		Lili						
DATE		2010.12.1						
					LILING YANGDONG		PORCELAIN INSULATORS	
					INDUSTRY COLTD			



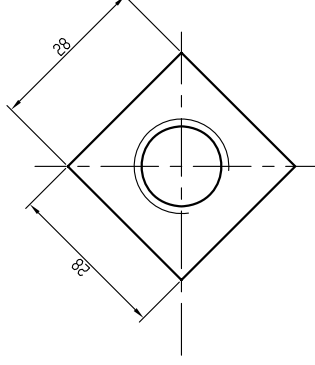
Technical specifications:
 1. Bolt and nut will be in hot galvanization, zinc coating according to JB/T8177-1999 standard.
 2. The surface of spring washer and plain washer will be electro-galvanizing passivation.



WASHER



NUT



5	SPRING WASHER 20	1	65Mn	GB93-87	
4	WASHER 20	1	A3		
3	BOLT	1	25		
2	NUT M20	1	25		
1	NUT M20	1	25		
NO.	NAME	NUMBER	MATERIAL	STANDARD	

图号		F1380	
图样标记	重量	比例	
共 2 张	第 2 张	张	
BOLT 57-2			
材料			
制 图		更改文件号	日期
核 对		王 志 宏	
审 核		李 群 林	
审 定		李 志 群	
批 准		刘 腰 才	
		王 志 宏	
LILING YANGDONG PORCELAIN INSULATORS INDUSTRY CO.LTD			

分发号
 借(通)用件登记
 描 图
 描 校
 旧底图总号
 底图总号
 签 字
 日 期